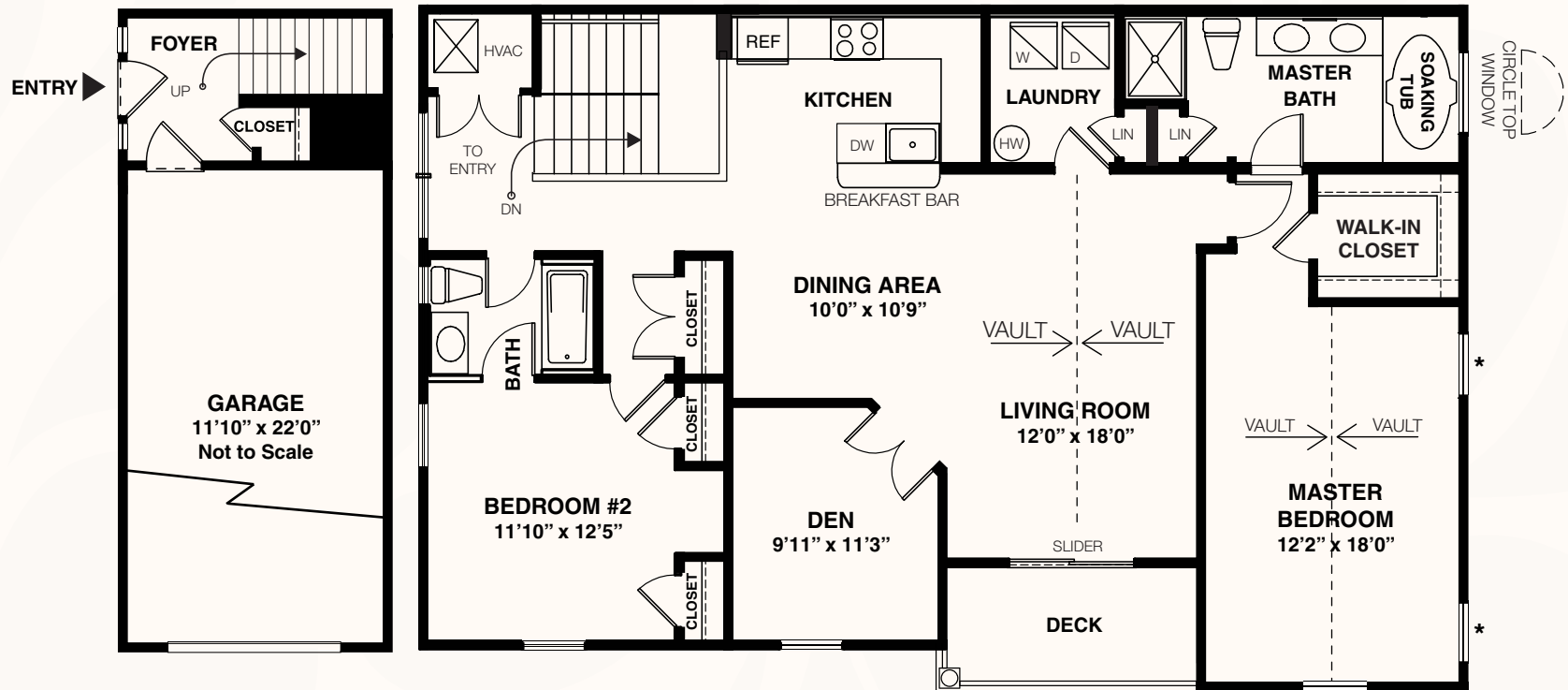


# floorplans



## THE JOHANNESBURG Third Floor End Unit 1,437 sq. ft.

\*Available in select units.

\*Floorplan details vary from residence to residence and are not necessarily built exactly as indicated in this brochure. Continuing a policy of research and development, Pond View at Westbrook, LLC must reserve the right to make modifications in design, terms and products without notice or obligations. The design and documents of Pond View at Weatherby Apartments are copyrighted. We have enforced and will continue to enforce our federal copyrights to protect our investment. Pond View at Westbrook, LLC is not responsible for any errors and/or omissions. All sizes and sq. ft. are approximate and for identification purposes only.

